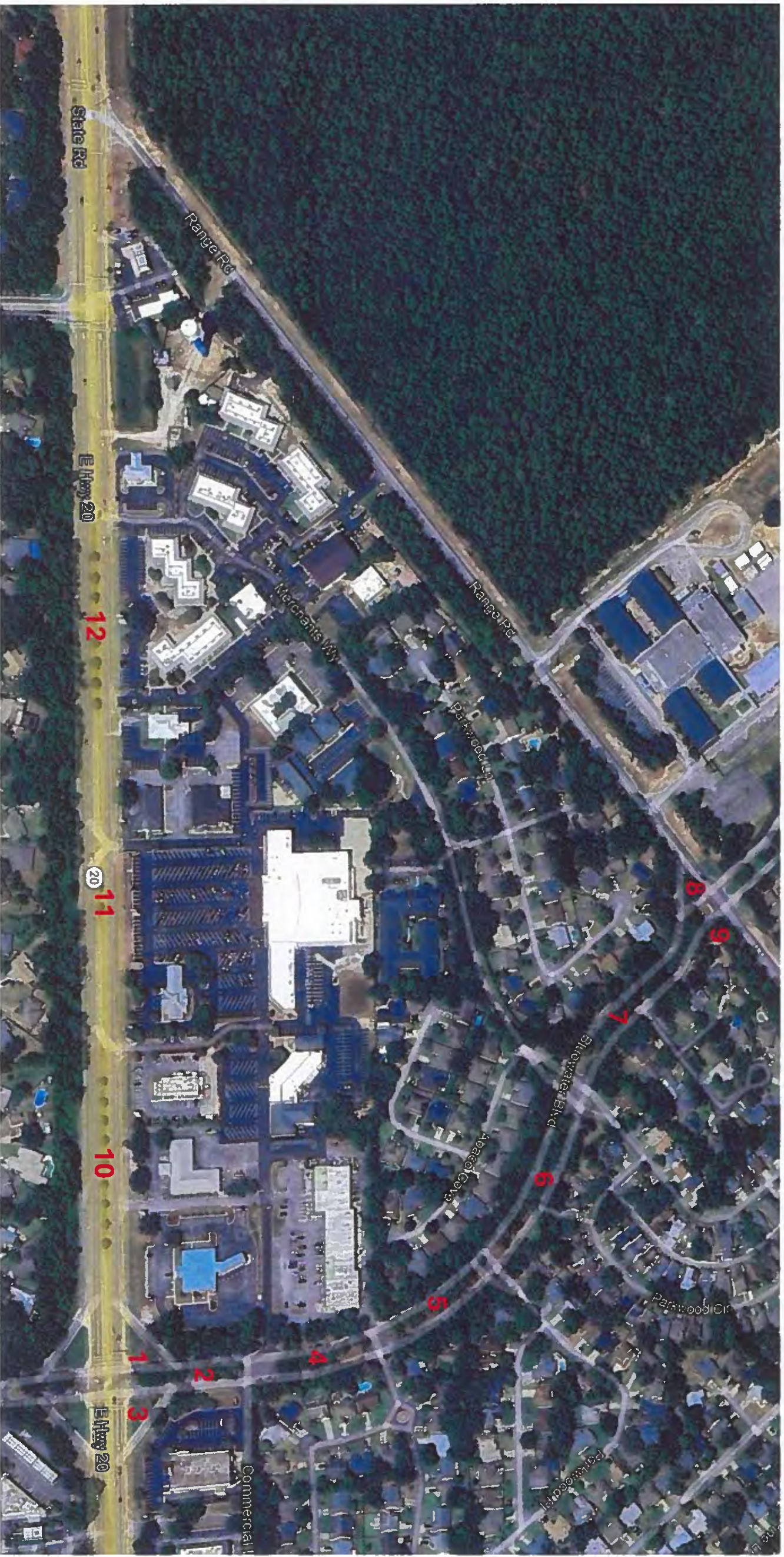


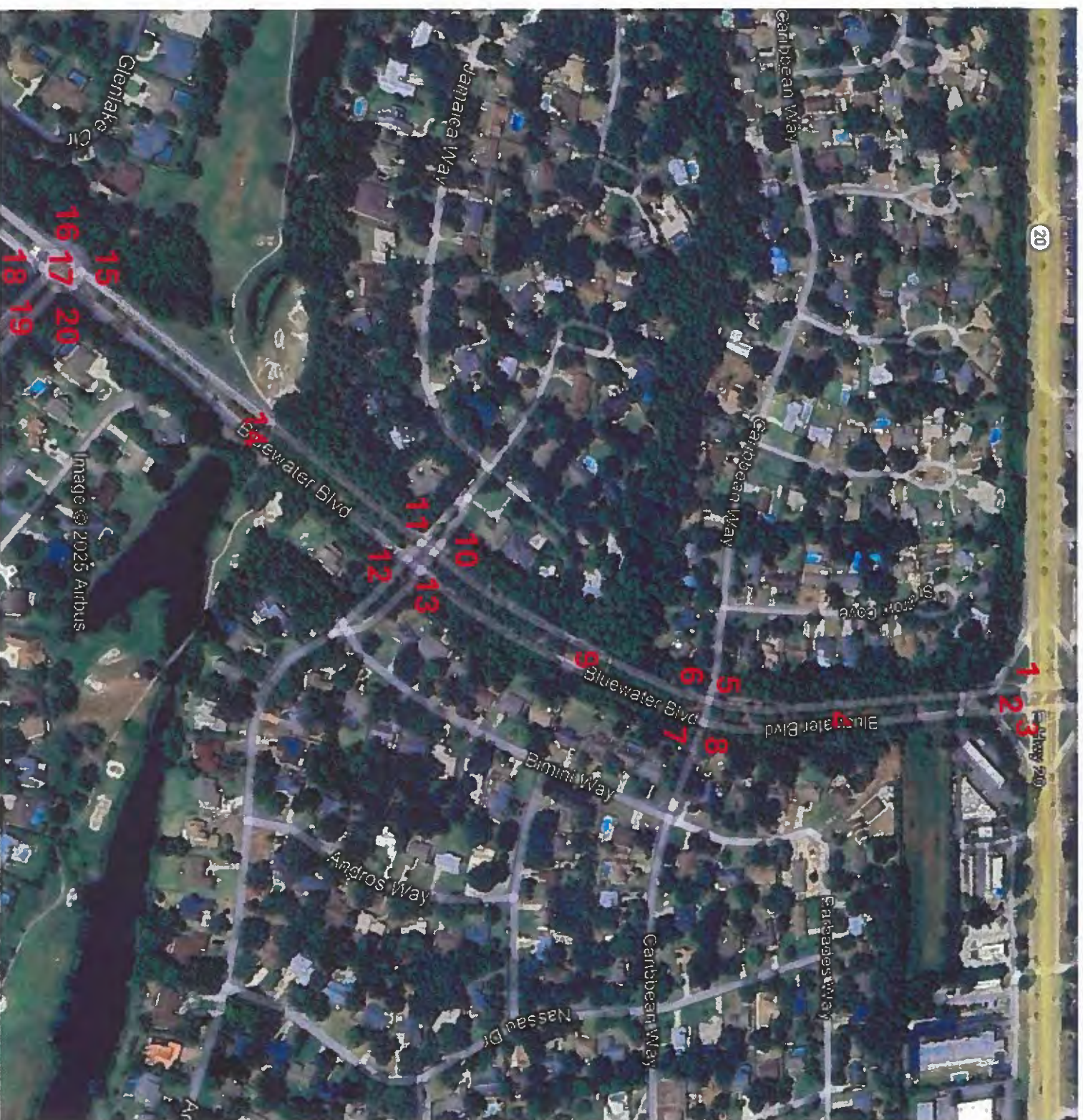
# Bluewater Bay MSBU

- **Map #1 – North of 20**
  - Bed 7 – Recommend backing plants – irrigation is available
- **Map #2 – South of 20 to the circle**
  - Bed 5 – Native plant walk – no bed
  - Bed 6 – no irrigation - Crape is good – No ground cover in bed
  - Bed 7 - No irrigation - Crape is good – needs 12 Plumbago
  - Bed 8 - No irrigation few plumbago remaining – needs 9 Plumbago & 6 Muhly
  - Bed 10 - Gets irrigation from home – looks great
  - Bed 11 – no irrigation - has Plumbago and Muhly - + 3 Muhly
  - Bed 12 – no irrigation - Completely empty
  - Bed 13 – No irrigation – Plumbago is good – needs 6 Muhly
- **Map #3 – Circle to White Point (includes woodlands)**
  - Bed 1 – No irrigation – backing plants only
  - Bed 2 – No irrigation – backing plants only
  - Bed 3 – Pump bed new screening plants
  - Bed 4 – Raised bed – Irrigation was damaged by sidewalk – Recommend irrigation NTE
  - Bed 4 – Raised bed – Irrigation was damaged by sidewalk – Recommend irrigation NTE
  - Bed 7 – full
  - Bed 8 – Fully grown in
  - Bed 9 – End of median empty (as requested, invasive grasses issues in the past)
  - Beds 11, 12 & 13 – Full grown – some blank parts – no irrigation
- **Map #4 – Bay & 20 to 3 way stop**
  - Beds 1 & 2 – Replace azaleas in between holly
  - Bed 3 – Install Liriope (replace flax)
  - Bed 4 & 5 – Empty - irrigation available
  - Bed 6 & 7 Empty - irrigation available
  - Beds 8 – 13 - Need replacements – irrigation is available

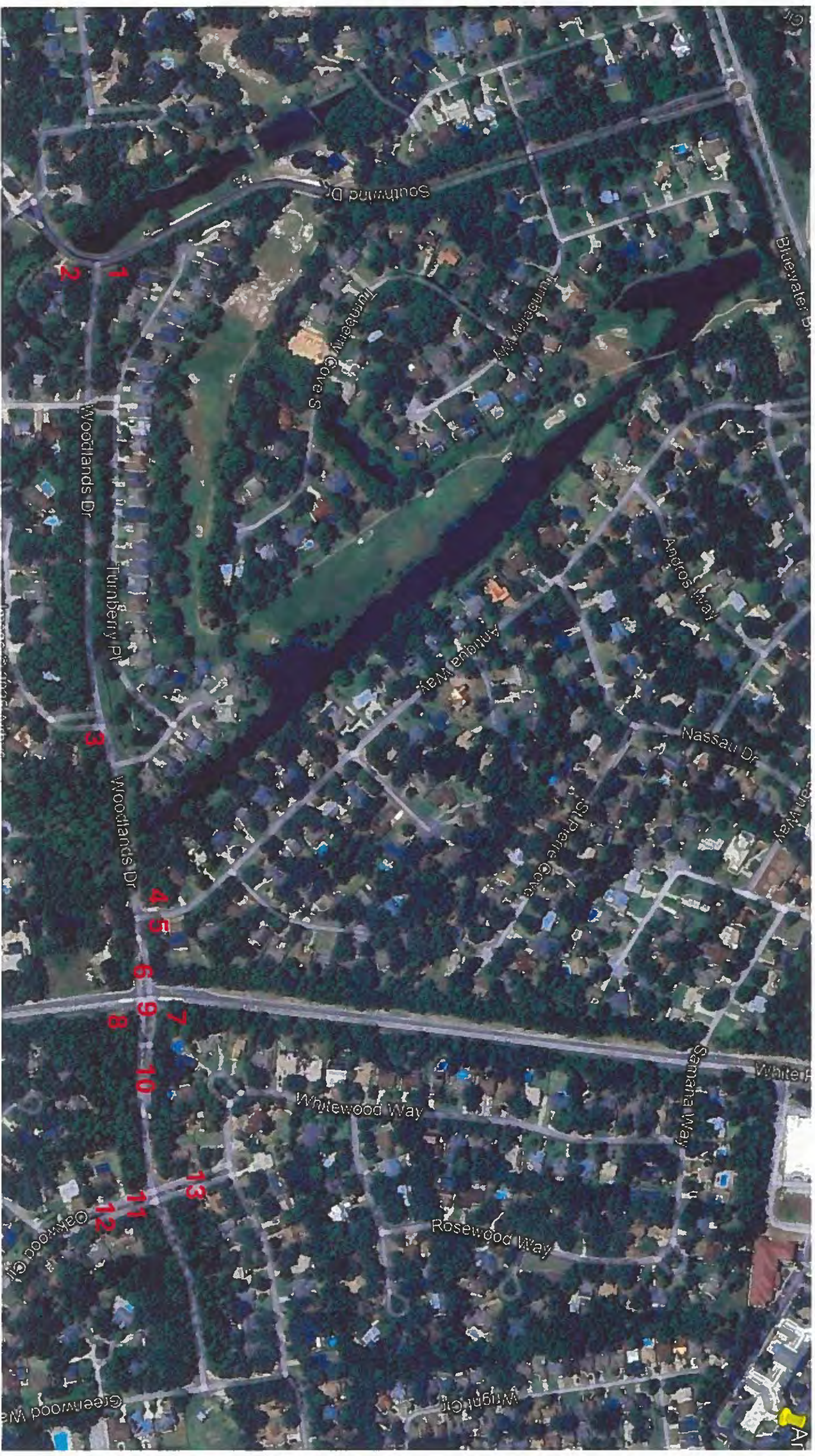
- **Map #5 – Bay & 20 to 3 way stop**
  - Bed 1 - Full
  - Bed 2 – Missing 1 holly and 2 azaleas - No irrigation
  - Beds 3 & 4 - need plants, No irrigation
  - Bed 5 – Single shrub – No irrigation
- **Map #6 – Blvd. Circle to 3 way stop**
  - Bed 4 – Install Warranty holly
  - Bed 9 – Remove declining flax plant lirioppe
  - Bed 10 – Expand straw area
  - Beds 11 & 12 – No irrigation – no front plants
  - Beds 14 & 15 - No irrigation - Some lantana
  - Bed 16 – Add adagio grass to match other corner
- **Map #7 – Oakmont to Wingfoot**
  - Bed 1 – remove declining and add new plants
  - Bed 2 – remove declining and add new plants
  - Bed 3 – install lirioppe where flax has failed
  - Bed 4 - install lirioppe where flax has failed
  - Bed 5 – Install Blue daze Warranty replacement
  - Bed 6 – Waiting on instruction
  - Bed 7 & 8 – Prune only (add straw?)



#1 of 7 – North of Hwy 20 beds



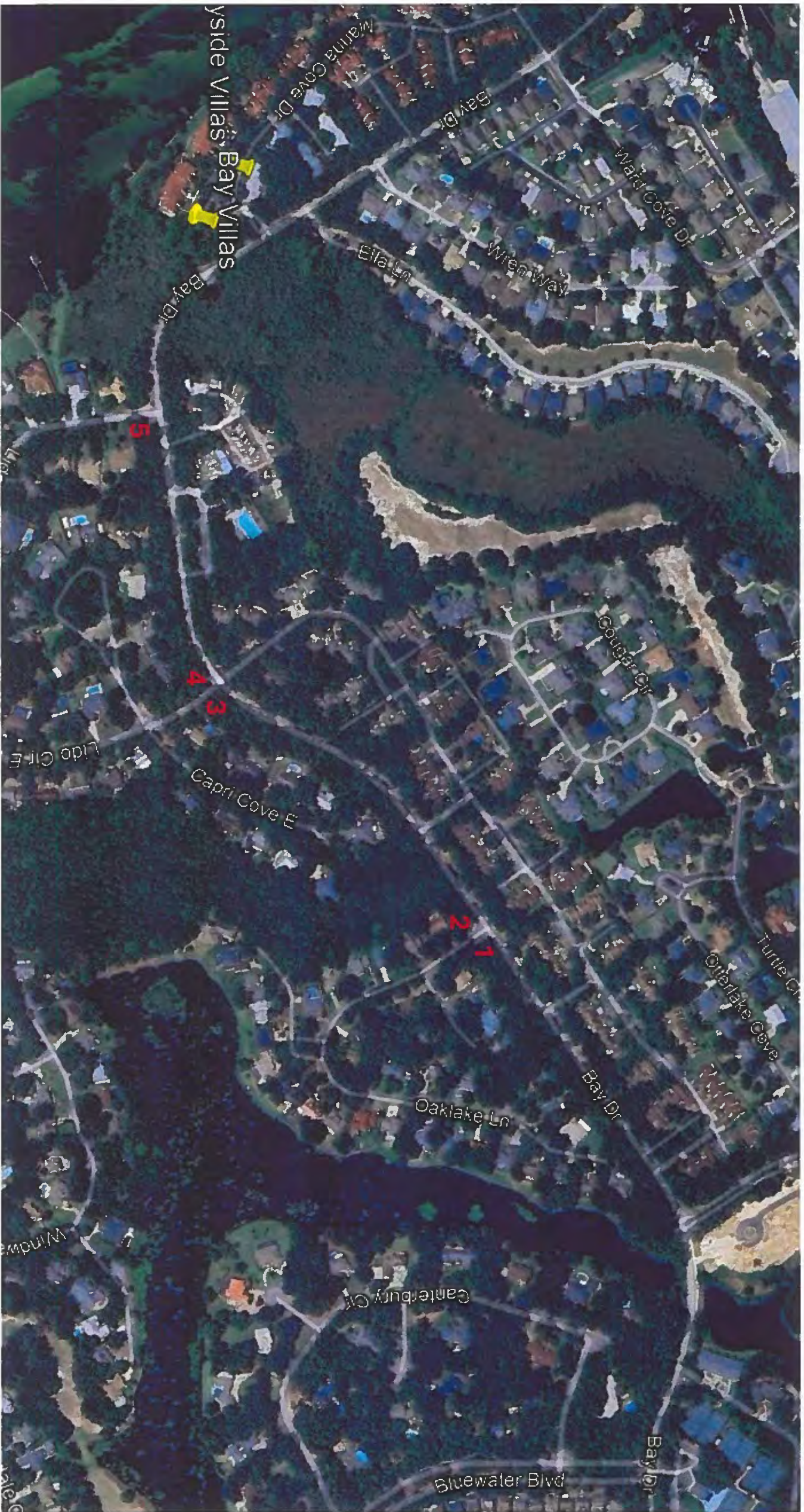
#2 of 7 – South of Hwy 20 beds



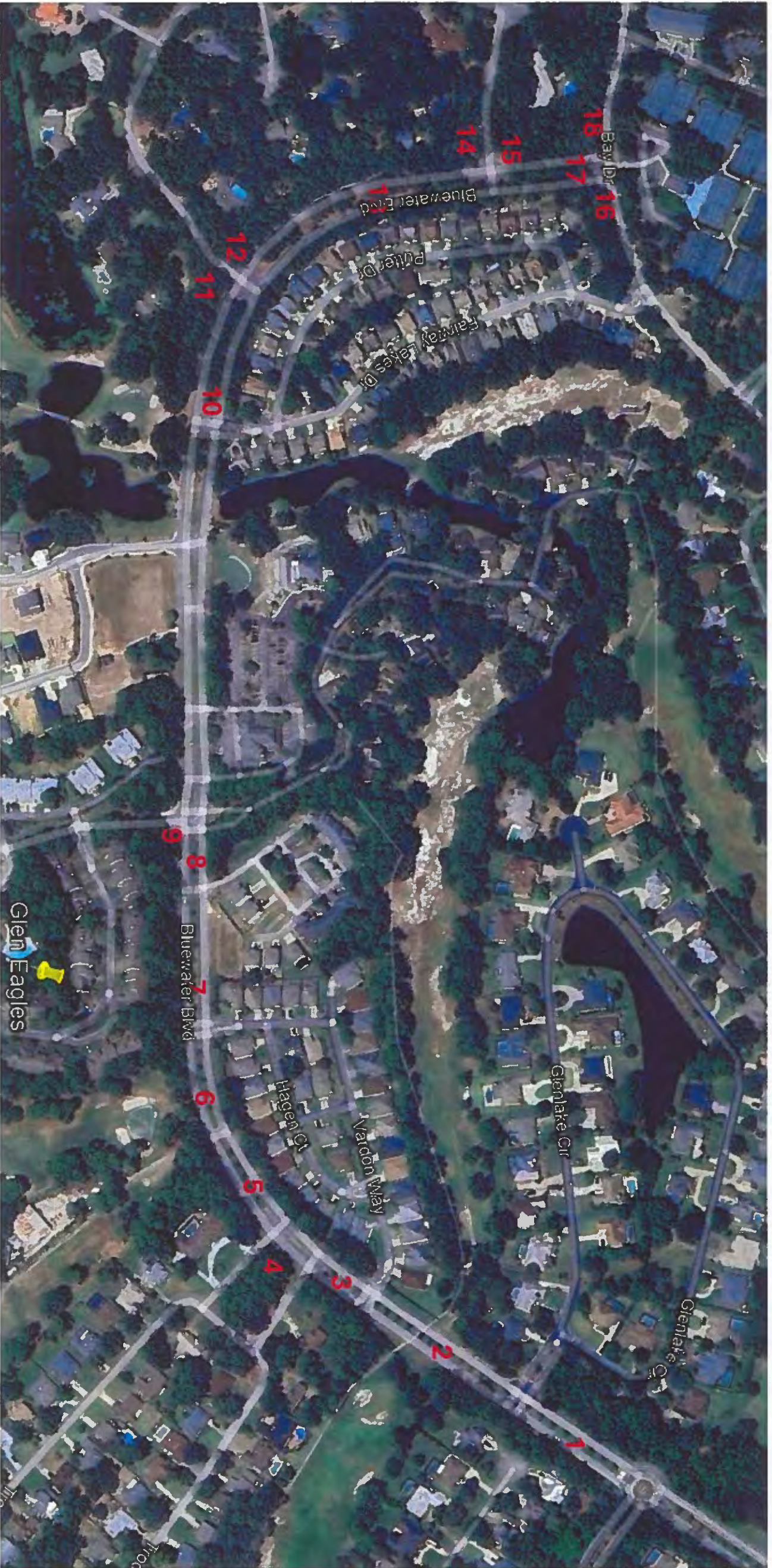
#3 of 7 – Circle to White Point (includes woodlands)



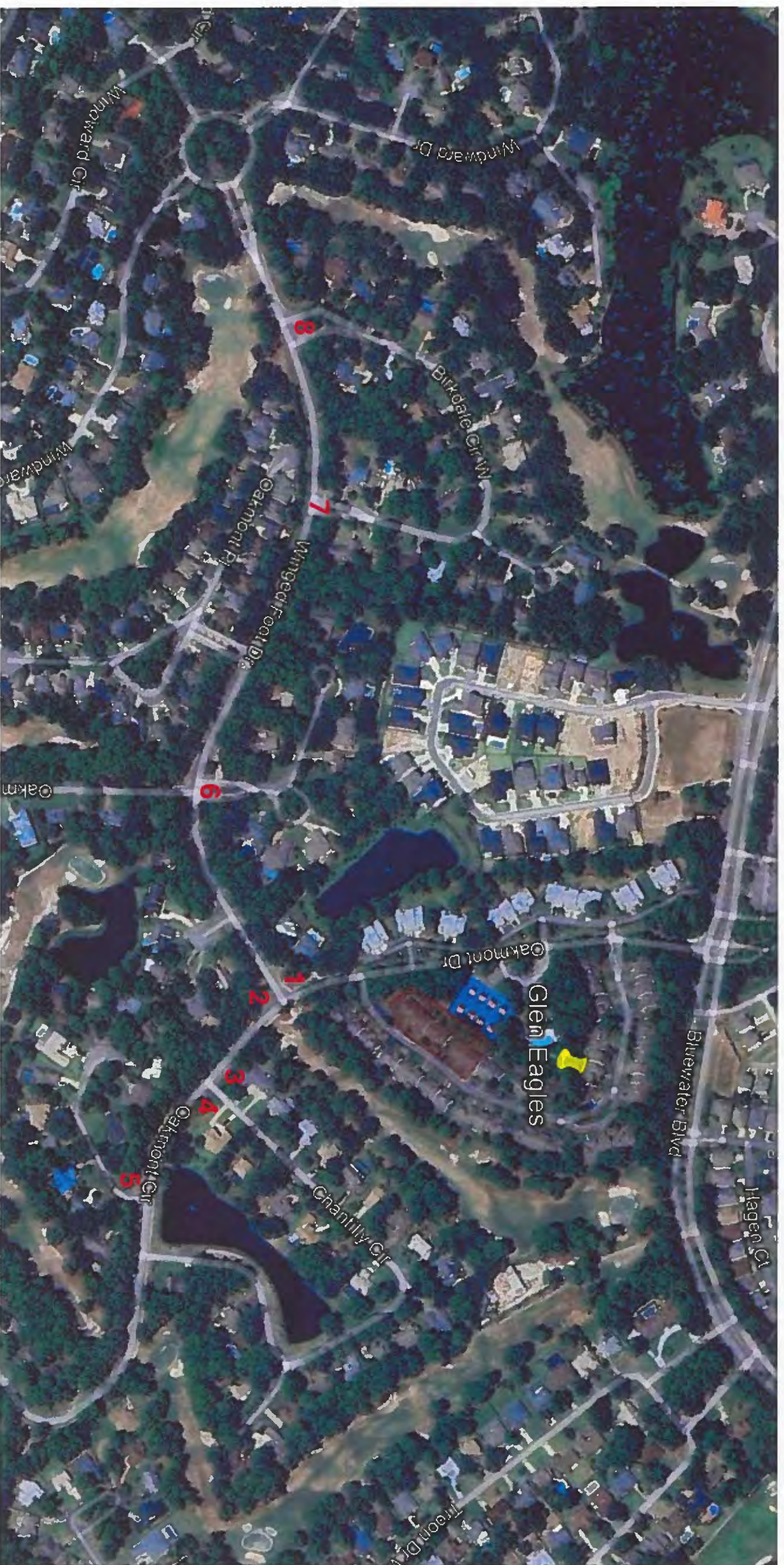
#4 of 7 – Bay & 20 to 3 way stop



#5 of 7 – Bay Drive 3 way to marina



#6 of 7 – Blvd. Circle to 3 way stop



#7 of 7 – Blvd. Oakmont to Wingfoot