



Quality Site Assessment

Prepared for: **Bluewater Bay MSBU**

General Information

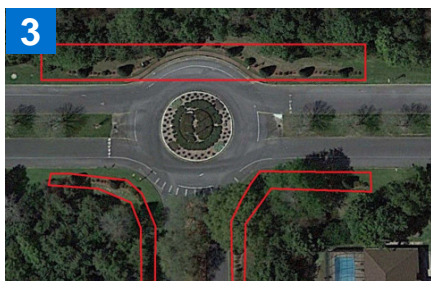
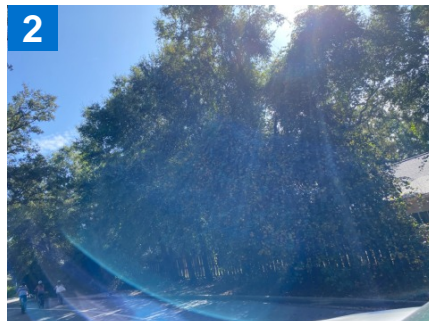
DATE: Thursday, Oct 05, 2023
NEXT QSA DATE: Thursday, Nov 09, 2023
CLIENT ATTENDEES: Debbie Stretch, Laura Landsberger
BRIGHTVIEW ATTENDEES: Tony Burris

Customer Focus Areas

Quality you can count on.

<h1>7</h1> <p>Seven Standards of Excellence</p>	 <p>1</p> <p>Site Cleanliness</p>	 <p>2</p> <p>Weed Free</p>	 <p>3</p> <p>Green Turf</p>
	 <p>4</p> <p>Crisp Edges</p>	 <p>5</p> <p>Spectacular Flowers</p>	 <p>6</p> <p>Uniformly Mulched Beds</p>

Maintenance Items

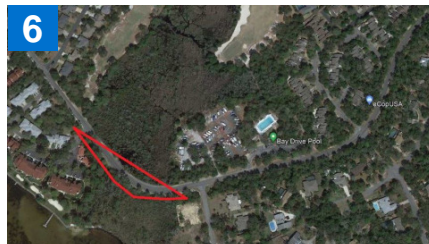


- 1** Range Road beds need to be serviced for weeds during the next visit
- 2** Approximately 200 yards southbound from the Range Road intersection this vine cluster needs to be cut back away from the sidewalk
- 3** The beds around the circle - Please completely remove any heavily declining plant material.
- 4** Spray out end of the Woodlands sign. We will look into planting options in the future.

QUALITY SITE ASSESSMENT

Bluewater Bay MSBU

Maintenance Items



5 The split rail fence has some vine growth that needs to be removed .

6 There are some vines encroaching on the sidewalk at the bend on Bay. One side of the road was already serviced and look great. Schedule the other side of the road.

7 Please cutback any vines that are growing in to the sidewalk at the school

Recommendations for Property Enhancements



- 1** A proposal to expand the beds and plant flax lily behind the beds to fill in the gaps has been submitted.
- 2** Vine, mitigation in the selected areas was completed. A requested quote to continue the vine. Mitigation Down Southwinds Dr., Wilby submitted.
- 3** a proposal to completely remove these beds will be submitted.